



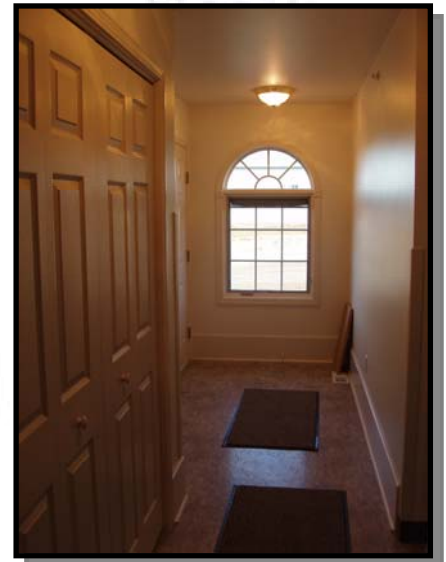
Resource Support & Development Kathy Lane Group Home

Location

Billings, MT

This wood framed duplex facility was designed and built for developmentally disabled adults, they are fully handicap accessible.

3 bedrooms, 1 bath and 1 office per side, includes a family room and kitchen. The maintenance free exterior includes prefinished metal soffit and fascia, EFIS and brick cladding.



Billings, MT
(406) 259-2854